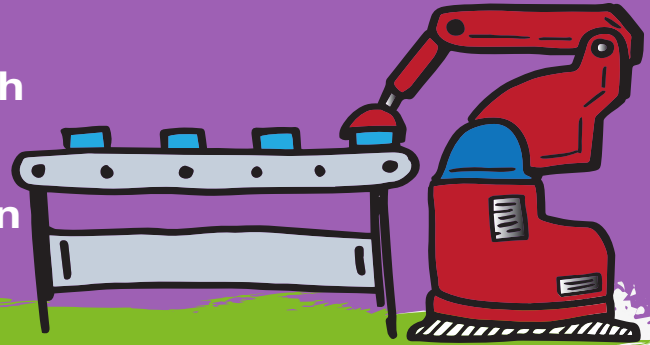


CONSIDER A CAREER IN THE TEXAS

ADVANCED TECHNOLOGIES AND MANUFACTURING INDUSTRY

IF YOU...

- Are interested in science or math
- Like working with your hands
- Are into robotics and automation
- Like to design things



EDUCATION OPTIONS:

INDUSTRY RECOGNIZED CERTIFICATE | ASSOCIATE DEGREE | BACHELOR'S DEGREE | MASTER'S DEGREE

OPPORTUNITIES

- COMPUTER SYSTEMS ANALYSIS
- SOFTWARE DEVELOPMENT
- ELECTRICAL ENGINEERING
- INDUSTRIAL MACHINERY
- NETWORK ADMINISTRATION

CAREER PROFILE:

MECHANICAL ENGINEER

A mechanical engineer in the Advanced Technologies and Manufacturing industry is someone who may work on the design and development of machines, tools, engines, and other mechanical equipment. A person working as a mechanical engineer has a strong desire to improve the quality of life and everyday conveniences, like heating and air conditioning, driving a car, and new inventions! You can become a mechanical engineer by completing a bachelor's degree.

Essential skills for the career include:

- Strong knowledge in mechanical engineering science and technology
- Clever mindset for solving complex problems
- Desire to help the public improve their quality of life

Average Entry Wage: \$64,510

THE INDUSTRY IS EXPECTED TO EMPLOY

320,000

IN TEXAS BY 2026

For more information about Texas career opportunities, visit jobsyall.com



TEXAS
WORKFORCE SOLUTIONS

A proud partner of the American Job Center network

